



# Bugging Out

Quilt designed by Heidi Pridemore for Blank Quilting  
Finished Size is 40" x 49"



Yellow Version

Blue Version



# Bugging Out

Finished Size: 40" x 49"

Quilt designed by Heidi Pridemore for Blank Quilting

## Fabric Requirements:

### Yellow Version

**Fabric A:** 7/8 yd 4390 Sorbet  
**Fabric B:** Fat 1/4 4368 Lime  
**Fabric C:** Fat 1/4 4368 Wine  
**Fabric D:** Fat 1/4 6014 Blue  
**Fabric E:** Fat 1/4 6016 Green  
**Fabric F:** Fat 1/4 6015 Red  
**Fabric G:** Fat 1/4 4368 Indigo  
**Fabric H:** Fat 1/4 4368 Yellow  
**Fabric I:** Fat 1/4 6012 Yellow  
**Fabric J:** 7/8 yd 6018 Blue  
**Fabric K:** Fat 1/8 6018 Yellow  
**Fabric L:** 1/2 yd 6017 Red  
**Fabric M:** 1-1/2 yds 6013 Yellow  
**Backing:** 3 yds 6012 Yellow  
**Fusible Web:** 2 yds

### Blue Version

**Fabric A:** 7/8 yd 4390 Sorbet  
**Fabric B:** Fat 1/4 4368 Lime  
**Fabric C:** Fat 1/4 4368 Butter  
**Fabric D:** Fat 1/4 6014 Yellow  
**Fabric E:** Fat 1/4 6016 Blue  
**Fabric F:** Fat 1/4 6015 Green  
**Fabric G:** Fat 1/4 4368 Indigo  
**Fabric H:** Fat 1/4 4368 Wine  
**Fabric I:** Fat 1/4 6012 Blue  
**Fabric J:** 7/8 yd 6018 Red  
**Fabric K:** Fat 1/8 6018 Blue  
**Fabric L:** 1/2 yd 6017 Yellow  
**Fabric M:** 1-1/2 yds 6013 Blue  
**Backing:** 3 yds 6012 Blue  
**Fusible Web:** 2 yds

## Cutting Instructions:

**Fabric A:** Cut six 7-1/4" x 8-1/2" strips. Cut six 1-1/4" x 8-1/2". Cut twelve 1-1/2" squares.  
Cut twelve 1-1/4" x 2-3/4" strips. Cut twelve 2" x 5-3/4" strips.

**Fabric B:** Cut six 1-3/4" x 8-1/2" strips. Cut six 1" x 8-1/2" strips. Cut twelve 1-1/4" x 2" strips.

**Fabric C:** Cut six 1-1/4" x 4" strips. See instructions to cut four front trims.

**Fabric D:** See instructions to cut two cage fronts and two cage sides.

**Fabric E:** See instructions to cut two cage fronts and two cage sides.

**Fabric F:** See instructions to cut two cage fronts and two cage sides.

**Fabric G:** See instructions to cut two front trims.

**Fabric H:** See instructions to cut six handles and six side trims.

**Fabric I:** Cut six 5-1/2" x 6-1/2" strips.

**Fabric J:** Cut thirty-one 1-1/2" x 8-1/2" strips. Cut five 2-1/2" x width of fabric (WOF) for Binding.

**Fabric K:** Cut twenty 1-1/2" squares.

**Fabric L:** Cut two 2-1/2" x 42" strips and two 2-1/2" x 50" strips. Piece as needed.

**Fabric M:** Cut two 4-1/2" x 50" strips and two 4-1/2" x 42" strips, Piece as needed.

**Backing:** Cut two 48" x WOF strips. Piece the strips together to make one 48" x 58" backing.

## Assembly Instructions:

### Bug Cage Block Assembly Instructions:

1. Sew one 1-3/4" x 8-1/2" Fabric B strip to the bottom of one 7-1/4" x 8-1/2" Fabric A strip to make one bug cage background. Repeat to make six bug cage backgrounds.
2. Following the manufacturer's instructions, trace the listed number of templates onto the fusible web. Roughly cut out each shape outside the drawn lines. Press each shape onto the back side of the listed fabrics. Cut out each shape on the drawn lines.
3. Refer to the quilt photo and assemble the six bug cages onto the 8-1/2" pieced backgrounds.
4. Finish the raw edges of each applique with a decorative stitch such as a satin or buttonhole stitch.

### Bug Jar Assembly Instructions:

5. Place one 1-1/2" Fabric A square on upper left corner of one 5-1/2" x 6-1/2" Fabric I piece (Fig. 1). Sew across the diagonal of the square from the upper right to the lower left corner (Fig. 2). Flip up the triangle formed and press. Trim away the excess fabric, leaving a 1/4" seam allowance.
6. Repeat with another 1-1/2" Fabric A square and the upper right corner of the 5-1/2" x 6-1/2" Fabric I piece (Fig. 3). Sew across the diagonal of the square from the upper left to the lower right corner (Fig. 3). Flip up the triangle formed and press. Trim away the excess fabric, leaving a 1/4" seam allowance.
7. Follow the block layout and sew together six bug jar blocks.
8. Refer to the quilt photo for block placement and starting with one 1-1/2" x 8-1/2" Fabric J strip, sew together four 1-1/2" x 8-1/2" Fabric J strips and three blocks, alternating them, to make one block row. Repeat to make four block rows.
9. Starting with one 1-1/2" Fabric K square, sew together four 1-1/2" Fabric K squares and three 1-1/2" x 8-1/2" Fabric J strips, alternating them, to make one sashing row. Repeat to make five sashing rows.

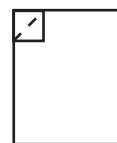


FIG 1

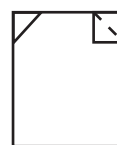


FIG 2

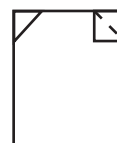
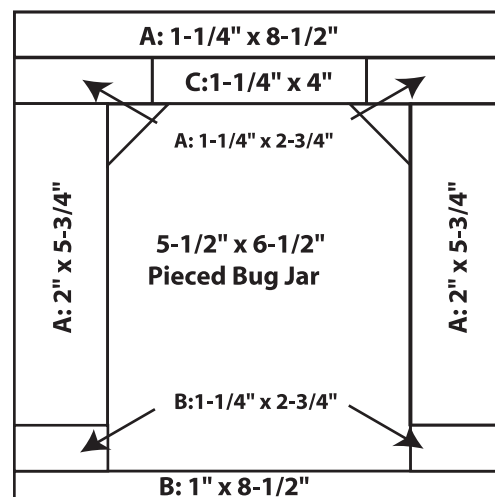


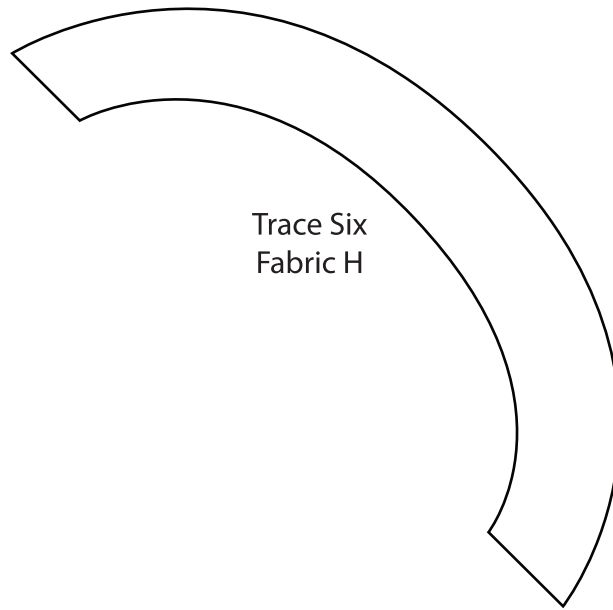
FIG 3

10. Starting and ending with a sashing row, sew together five sashing rows and four block rows to make the quilt top.
11. Sew one 2-1/2" x 42" Fabric L strip to the bottom of each 4-1/2" x 42" Fabric M strips to make the top and bottom borders. Sew one 2-1/2" x 50" Fabric L strip to the bottom of each 4-1/2" x 50" Fabric M strip to make the side borders.
12. Center one side border on each side of the quilt top. Start sewing the strip a 1/4" from the top edge of the quilt top and stop a 1/4" from the bottom edge. DO NOT TRIM THE EXCESS. Repeat with the top and bottom borders.
13. Using your favorite method, miter each corner of the borders and trim excess fabric.
14. Layer, quilt and bind as desired.

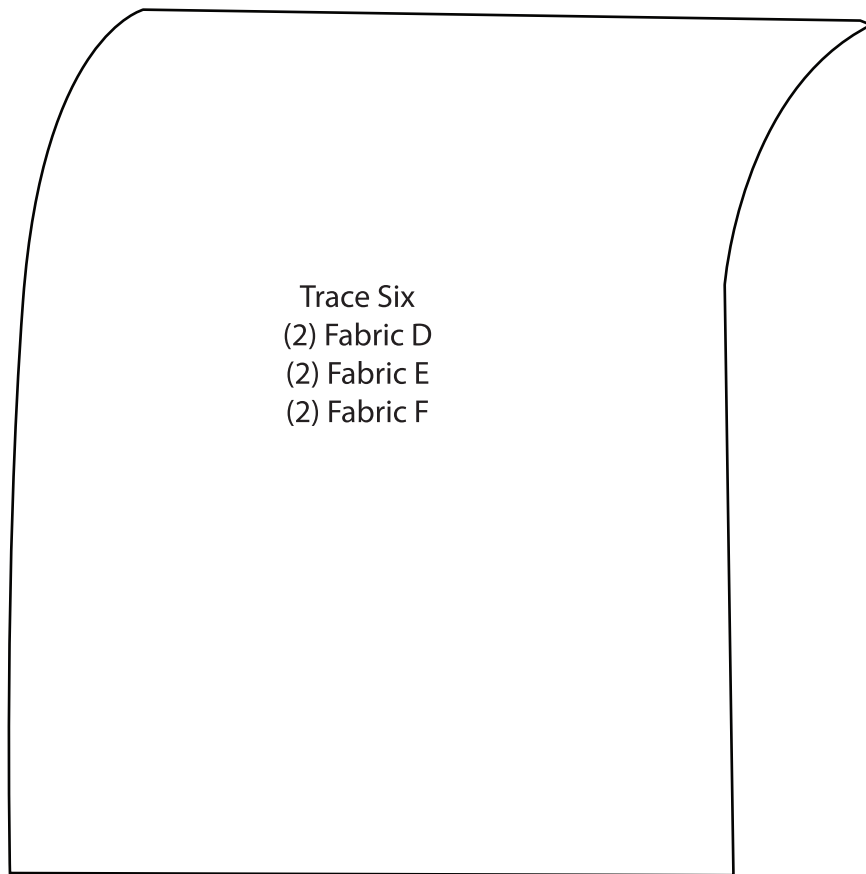


Bug Jar Layout

(Templates on following pages.)



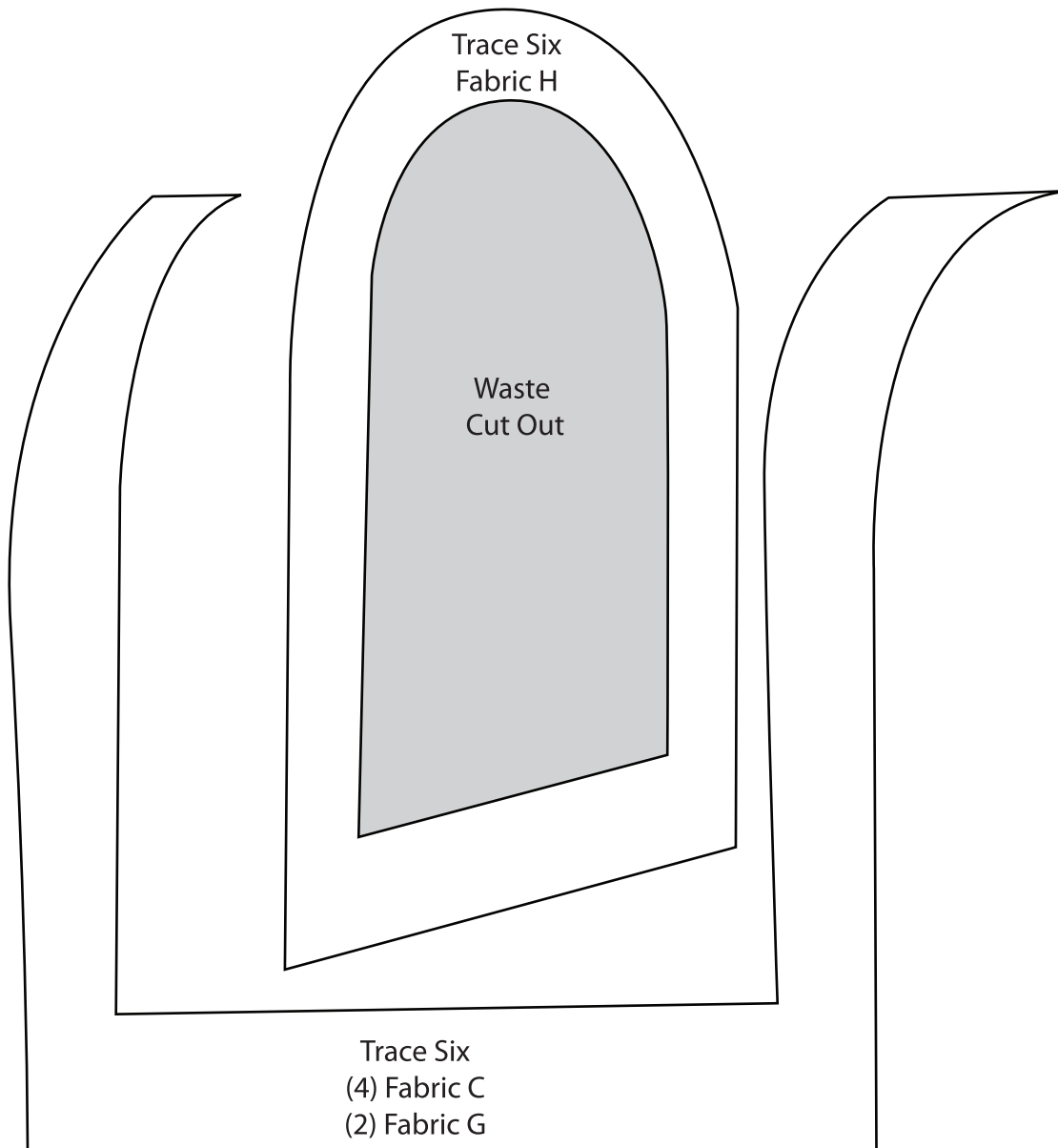
Trace Six  
Fabric H



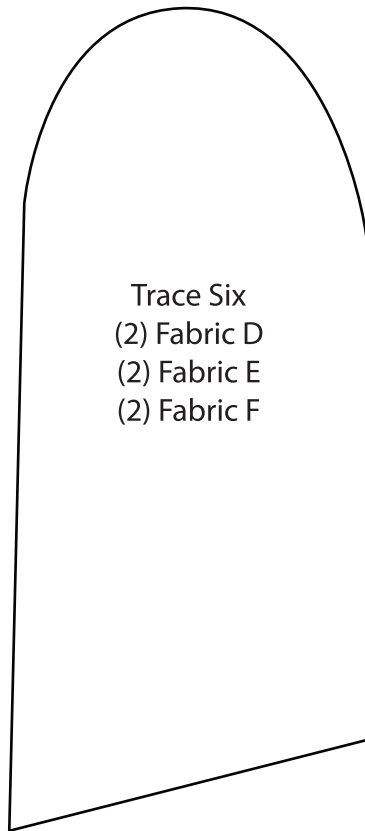
Trace Six  
(2) Fabric D  
(2) Fabric E  
(2) Fabric F



Downloads from the internet are not always consistent.  
Please compare this ruler with an actual ruler to verify  
size accuracy of templates before cutting.



Downloads from the internet are not always consistent.  
Please compare this ruler with an actual ruler to verify  
size accuracy of templates before cutting.



Downloads from the internet are not always consistent.  
Please compare this ruler with an actual ruler to verify  
size accuracy of templates before cutting.

*While all possible care has been taken to ensure the accuracy of this pattern, we are not responsible for printing errors or the way in which individual work varies.*

